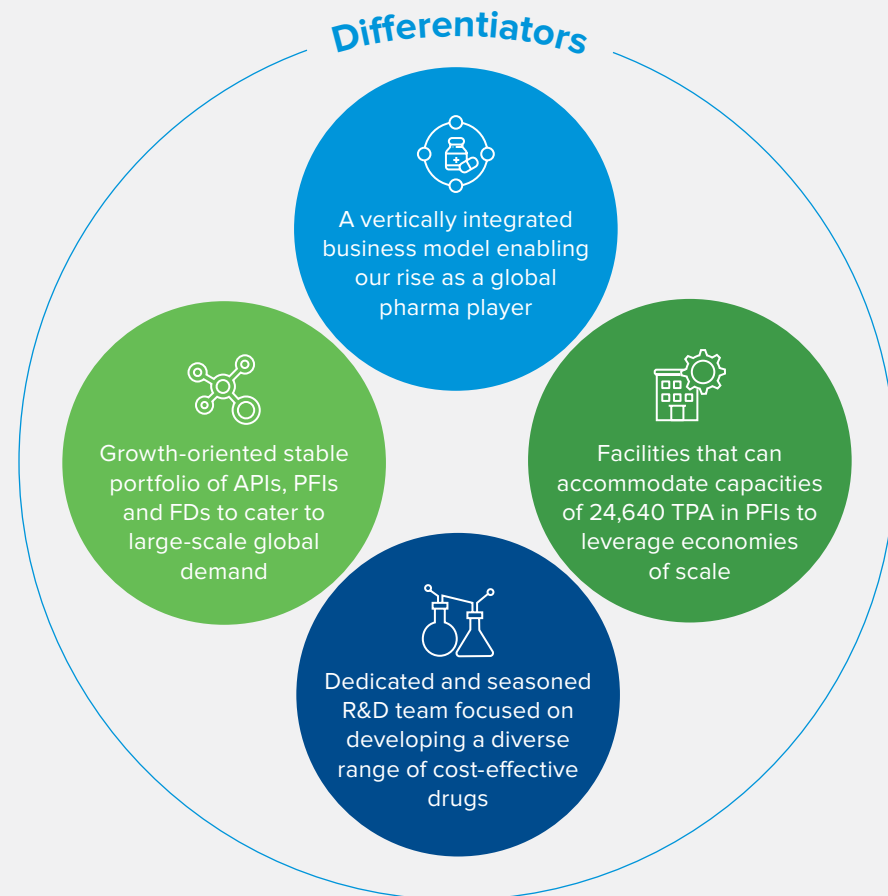


COMPANY OVERVIEW

For quality healthcare that transforms lives

Granules India Limited is among India's largest pharma manufacturing companies with over three decades of experience in manufacturing high quality pharmaceutical products. We produce Active Pharmaceutical Ingredients (API), Pharmaceutical Formulation Intermediates (PFI) and Finished doses (FD) and the same are marketed across key markets of North America, Europe, India and Latin America. Powered by vertical integration, scale, manufacturing excellence, focused execution and cost leadership through continuous innovation, we offer high quality, affordable medicines to people across the world.

We have built one of the largest PFI and single site FD facilities in the world. Our's is the world's largest Paracetamol API facility. We have state-of-the-art research and development centres in Hyderabad and Virginia.



VISION

To be the global leader in pharmaceutical manufacturing by process innovation and unparalleled efficiencies.

VALUES



Integrity
We consistently adhere to moral and ethical principles in our thinking as well as actions while conducting our business



Quality
We strive to maintain the highest standards in our products, processes and system all the time

MISSION

Our drive to be the best is unparalleled. We will match our drive by partnering with global leaders in our markets, building lasting relationships, and foundation for mutual growth and success.



Improvement
We systematically enhance value of our products, processes and services in pursuit of excellence



People
We cultivate a conducive work environment where every employee feels excited and can realise their potential



Customer Centricity
We focus on our energies towards understanding and addressing customer expectations thereby building lasting business relationships



80+
Countries where we operate

7
Manufacturing plants

Largest PFI facility in the world

5,000+
Employees

60+
ANDA filings

39,360 TPA of API
24,640 TPA of PFI
23.3 Billion dosages of FD
Installed Capacity